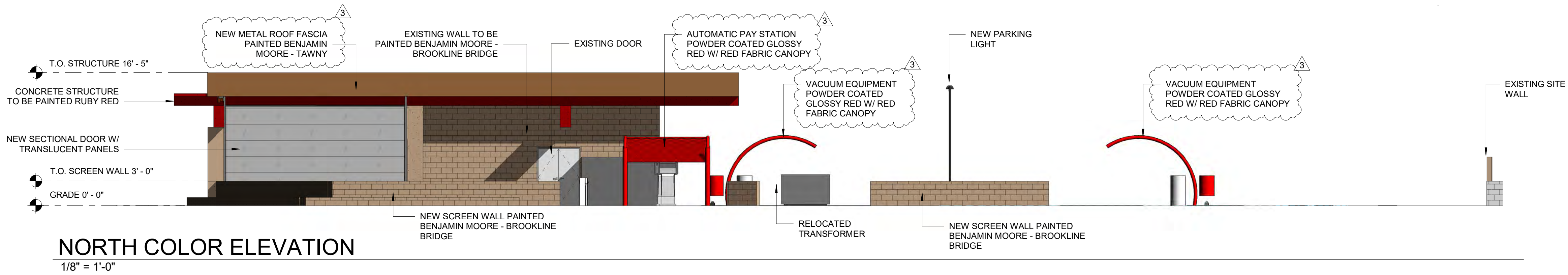




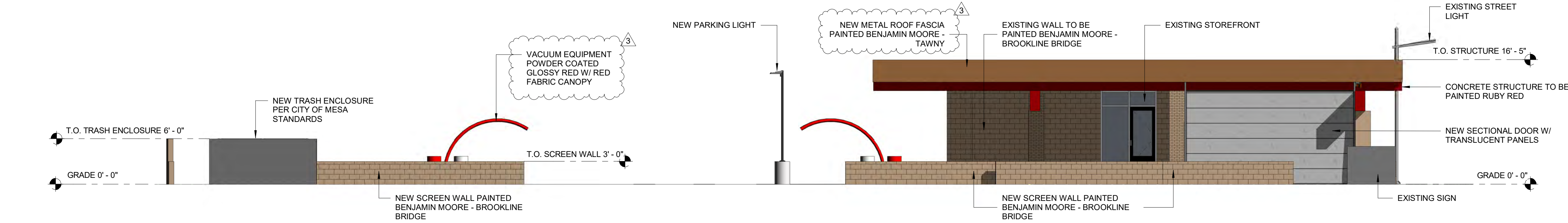
MERGE  
ARCHITECTURAL  
GROUP

600 N 4th ST, SUITE 112  
PHOENIX ARIZONA 85004  
P (602) 635 1581  
F (602) 635 1581  
cam@mergeAG.com  
cdc@mergeAG.com



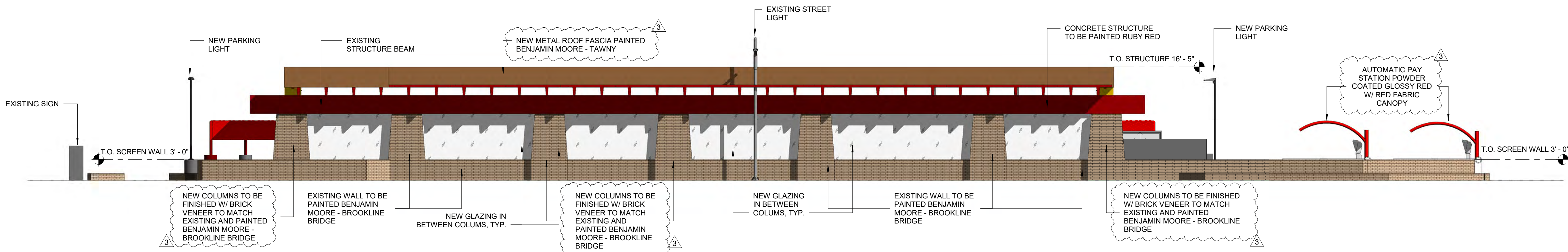
NORTH COLOR ELEVATION

1/8" = 1'-0"



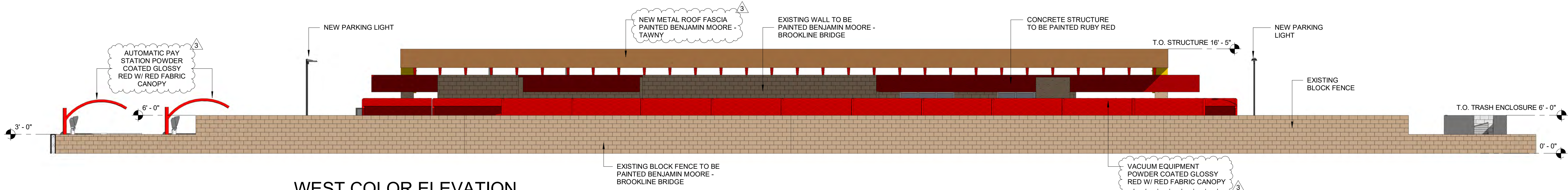
SOUTH COLOR ELEVATION

1/8" = 1'-0"



EAST COLOR ELEVATION

1/8" = 1'-0"



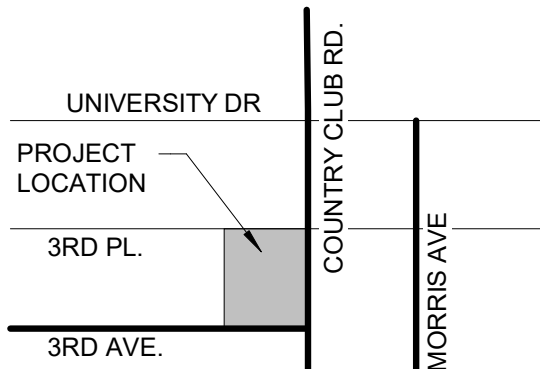
WEST COLOR ELEVATION

1/8" = 1'-0"

SEAL:

OWNER INFORMATION  
**3K1 CONSULTING  
SERVICES, LLC**

PROJECT:  
**QUICK N' CLEAN  
CAR WASH**  
324 N COUNTRY CLUB  
MESA, AZ



VICINITY MAP

REVISIONS:		
MARK	DATE	DESCRIPTION
3	4/27/18	CITY COMMENTS 3

PROJECT NO: 18C-011  
DESIGN BY: CAM  
CHK'D BY: CAM

COPYRIGHT:  
THIS DRAWING IS AN INSTRUMENT OF SERVICE ONLY AND IS AND SHALL REMAIN, EXCLUSIVE PROPERTY OF THE ARCHITECT. NO REPRODUCTION OR OTHER USE SHALL BE MADE BY ANY PERSON OR FIRM WITHOUT THE EXPRESS WRITTEN PERMISSION OF THE ARCHITECT. ANY UNAUTHORIZED USE SHALL VOID THE ARCHITECT'S SEAL AND SIGNATURE HEREON AND NO PROFESSIONAL LIABILITY WILL REMAIN.

**COLOR  
EXTERIOR  
ELEVATIONS**

DATE: 4/5/18  
SHEET

A300





MERGE  
ARCHITECTURAL  
GROUP

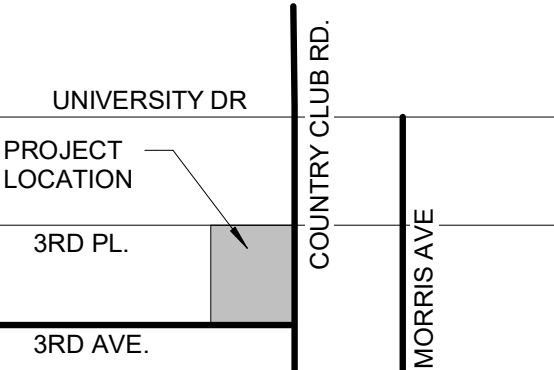
600 N 4th ST, SUITE 112  
PHOENIX ARIZONA 85004  
P (602) 635 1581  
F (602) 635 1581  
cam@mergeAG.com  
cdc@mergeAG.com



SEAL:

OWNER INFORMATION  
**3K1 CONSULTING  
SERVICES, LLC**

PROJECT:  
**QUICK N' CLEAN  
CAR WASH**  
324 N COUNTRY CLUB  
MESA, AZ



VICINITY MAP

REVISIONS:

MARK	DATE	DESCRIPTION

PROJECT NO: 18C-011  
DESIGN BY: MSC  
CHK'D BY: CAM

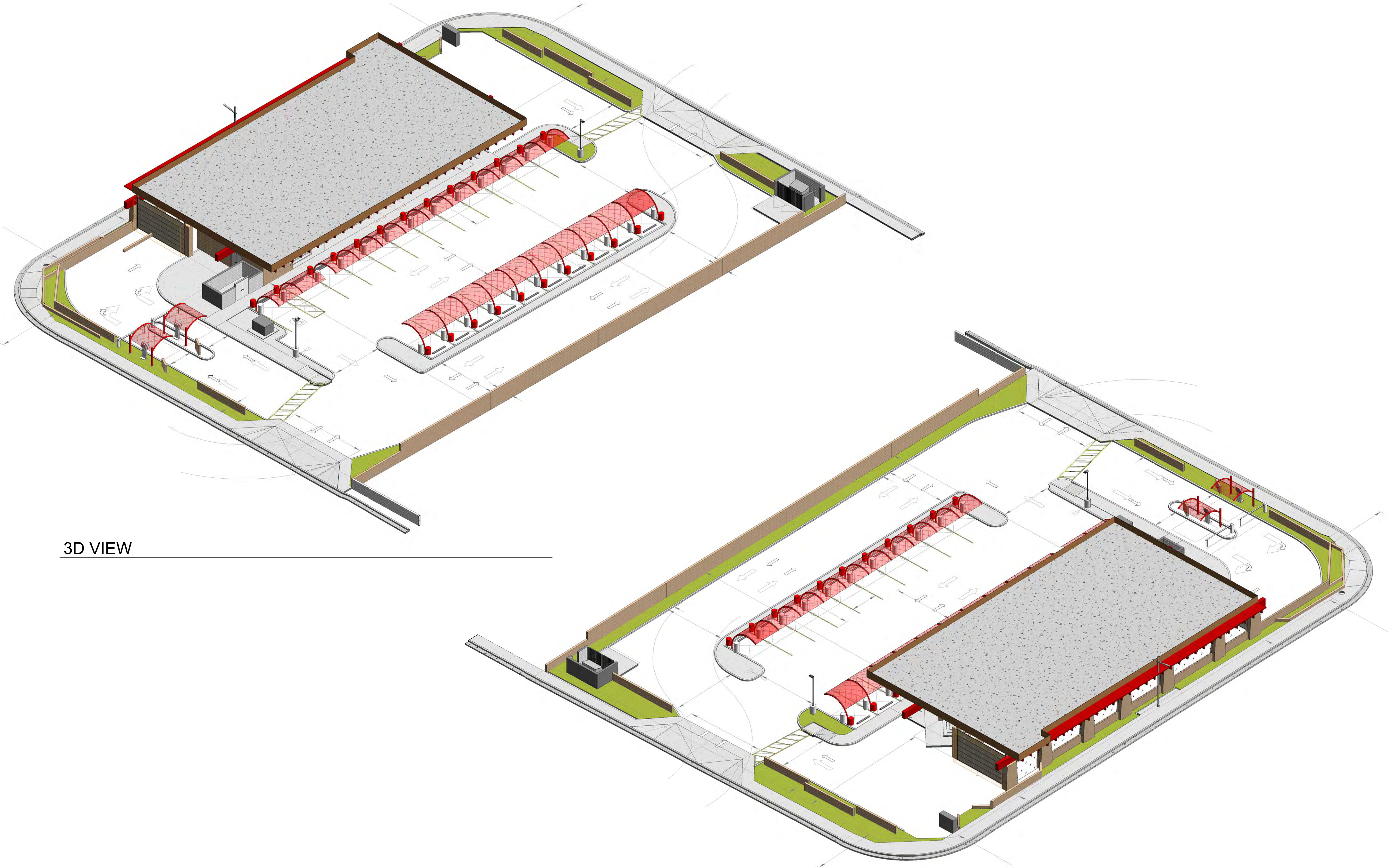
COPYRIGHT:  
THIS DRAWING IS AN INSTRUMENT OF SERVICE ONLY AND IS AND SHALL REMAIN, EXCLUSIVE PROPERTY OF THE ARCHITECT. NO REPRODUCTION OR OTHER USE SHALL BE MADE BY ANY PERSON OR FIRM WITHOUT THE EXPRESS WRITTEN PERMISSION OF THE ARCHITECT. ANY UNAUTHORIZED USE SHALL VOID THE ARCHITECT'S SEAL AND SIGNATURE HEREON AND NO PROFESSIONAL LIABILITY WILL REMAIN.

SHEET TITLE

3D VIEW

DATE: 4/5/18  
SHEET

A900



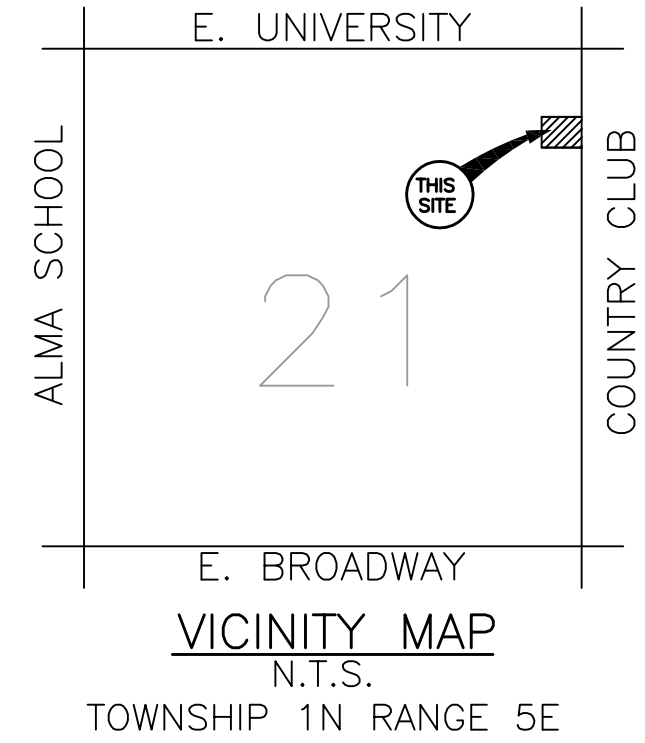
3D VIEW

3D VIEW 2



SITE PLAN  
Quick n Clean

324 N. COUNTRY CLUB, MESA AZ 85201



NTS

**ENGINEER :**  
HELIX ENGINEERING, LLC  
3240 E. UNION HILLS DR  
SUITE 112  
PHOENIX, ARIZONA 85050  
TEL (602) 788-2616  
CONTACT: STEVE BOWSER

**DEVELOPER**  
3K1 CONSULTING SERVICES, LLC  
11811 N. TATUM BOULEVARD, SUITE 1051  
PHOENIX, ARIZONA 85028  
(602) 684-5210 MOBILE  
(602) 850-8101 OFFICE  
(480) 393-0946 FAX  
CONTACT: MICHAEL SCARBROUGH

PROJECT DATA:

PROJECT NAME: QUICK N CLEAN  
PROJECT ADDRESS: 324 N. COUNTRY CLUB DR  
PROPOSAL FOR TO REMODEL EXISTING CAR WASH.

JURISDICTION: CITY OF MESA  
EXISTING ZONING: DB-1  
PROPOSED ZONING: DB-2 WITH A USE PERMIT

AREA  
OVERALL SITE AREA: NET: 36,557 SF ~ 0.84 AC  
APN: 135-59-035, 036, 069, 070  
LEGAL DESCRIPTION: A PORTION OF LOTS 1, 2, 35, 36 OF BOND ACRES MCR BOOK 46 PAGE 36

BUILDING HEIGHTS  
MAX BUILDING HEIGHT: 40'  
BUILDING HEIGHT PROVIDED: 15' TO ROOF PLUS PARAPET

BUILDING SETBACKS  
FRONT 15' MIN REQUIRED 0' ACTUAL  
STREET SIDE 15' MIN REQUIRED 0' ACTUAL (NORTH - PAY CANOPY)  
STREET SIDE 15' MIN REQUIRED 52' ACTUAL (SOUTH)  
REAR 10' MIN REQUIRED 97' ACTUAL (PAY CANOPY)

YARD SETBACKS  
FRONT PLAN SPECIFIC 0' ACTUAL  
STREET SIDE PLAN SPECIFIC 4.4' ACTUAL (NORTH)  
STREET SIDE PLAN SPECIFIC 9.4' ACTUAL (SOUTH)  
REAR PLAN SPECIFIC 5.3' ACTUAL (WEST)

BUILDING AREA 6532 SF (UNDER REVISED ROOF)

PARKING:  
1 SPACE PER 375 SF INCLUDING RETAIL AND WASH TUNNEL

REQUIRED: 6532 / 375 = 18 SPACES  
PROVIDED: 22 SPACES (21 REGULAR + 1 ACCESSIBLE)

LOT COVERAGE: 6532 / 36,557 = 18%

▽ = ACCESSIBLE LINK TO PUBLIC STREET

CITY APPROVAL BLOCK

ZONING CASE FOR THIS DEVELOPMENT:  
DESIGN REVIEW:

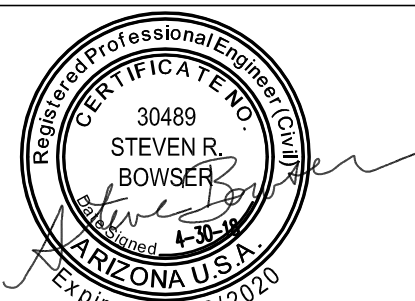
SITE PLAN

SCALE: 1" = 20'-0"

SCALE: 1" = 20'

CLIENT:

**3K1 Consulting Services**  
11811 N. Tatum Boulevard, Suite 1051  
Phoenix, Arizona 85028  
ph: (602) 850-8101  
fax: (602) 850-8101  
contact: Michael E. Scarbrough



PRELIMINARY

Helix Engineering, LLC  
Engineering / Surveying / Consulting

3240 E Union Hills  
Suite 112  
Phoenix AZ 85050  
(PH) 602-788-2616  
www.hxeng.com

THIS DRAWING IS COPYRIGHTED AND IS THE SOLE PROPERTY OF THE OWNER. IT IS PRODUCED SOLELY FOR USE BY THE OWNER AND ITS AFFILIATES. REPRODUCTION OR USE OF THIS DRAWING AND/OR THE INFORMATION CONTAINED IN IT IS FORBIDDEN WITHOUT THE WRITTEN PERMISSION OF THE OWNER.

TWO WORKING DAYS BEFORE YOU DIG.  
CALL FOR THE BLUE STAKES  
1-800-782-5348  
BLUE STAKE CENTER

RELEASE	
DATE	
8-21-17	DRAFT SP
9-6-17	PREAP SITE PLAN
2-22-18	SP AND PRELIM GD
3-26-18	UPD SP
4-27-18	UPD SP
4-30-18	UPD SP

REVISIONS	
NO.	DATE
1	
2	
3	

PROJECT NAME

QUICKNCLEAN CAR WASH

PROJECT ADDRESS

324 N. COUNTRY CLUB DR  
MESA, ARIZONA  
85201

PROJECT AREA

3RD PL & COUNTRY CLUB DR

HELIX JOB NUMBER

329

SHEET TITLE

SITE PLAN

SHEET

SP-1

PLOT SCALE: 1:1 @ 24"x36"; 1:2.2 @ 11"x17"







Project Name: <b>Quick N Clean Car Wash</b>		CONTACT:	
SCALE(S):	ELEVATION:	ARTWORK DATE: <b>3-27-18</b>	DATE OF APPROVAL:
<b>3/8" = 1' - 0"</b>		APPROVAL SIGNATURE:	

\*This sign design is the property of The Sign Company of Arizona, LLC and any portions or design elements may not be reproduced without prior written consent!

THE



COMPANY

OF ARIZONA

3534 N. 42nd Ave  
Phoenix, AZ 85019

ROC#CR276279

480-525-2041



\*\*Existing sign face to be removed

Replace existing sign face with new routed aluminum face backed with 211 red acrylic  
LED board to remain, repaint pole cover to bldg colors

92"

16"





Project Name: <b>Quick N Clean Car Wash</b>		CONTACT:	
SCALE(S):	ELEVATION:	ARTWORK DATE: <b>3-27-18</b>	DATE OF APPROVAL:
<b>3/8" = 1' - 0"</b>		APPROVAL SIGNATURE:	

\*This sign design is the property of The Sign Company of Arizona, LLC and any portions or design elements may not be reproduced without prior written consent!

THE

SIGN

COMPANY

OF ARIZONA

3534 N. 42nd Ave

Phoenix, AZ 85019

ROC#CR276279

480-525-2041

\*\*Existing signs to be removed



South Elevation



North Elevation

- Manufacture and install

  - illuminated pan channel letters
  - 5" returns painted black;
  - 1" black trimcap;
  - white LED illumination;
  - sign faces to be white with red and mango yellow vinyl overlay;
  - "N" in logo to be vinyl and not pan channel;
  - "Car Washing... Fast & Easy" to be FCO 1/2" black sintra and non illuminated,
  - mounted sign flush to wall.







W 3rd St





N Orange

N Vineyard

W University Dr

W 3rd St

W 2nd Pl

W 3rd Pl

87

N Morris

N Lebaron
















	Project 17-24162-0 <b>QUICK N CLEAN - KILLEEN</b>  Submitted By <b>SPECTRUM LIGHTING INC AUSTIN</b>	Catalog Number <b>KAD 250M SR4SC TB SCWA SPD04 LPI</b>  Notes <b>W/LAMPS</b>	Type <b>A</b>
--	---	--	------------------



### FEATURES & SPECIFICATIONS

**INTENDED USE** – Ideal for parking areas, street lighting, walkways and car lots.

**CONSTRUCTION** – Rugged, die-cast, soft corner aluminum housing with 0.12” nominal wall thickness. Die-cast door frame has impact-resistant, tempered, glass lens that is fully gasketed with one-piece tubular silicone.

Finish: Standard finish is dark bronze (DDB) polyester powder finish, with other architectural colors available.

**OPTICS** – Anodized, aluminum reflectors: IES full cutoff distributions R2 (asymmetric), R3 (asymmetric), R4 (forward throw) and R5S (square) are interchangeable. High-performance anodized, segmented aluminum reflectors IES full cutoff distributions SR2 (asymmetric), SR3 (asymmetric) and SR4SC (forward throw, sharp cutoff). High-performance reflectors attach with tool-less fasteners and are rotatable and interchangeable.

**ELECTRICAL** – Ballast: High pressure sodium: 250W is high reactance, high power factor. Constant wattage autotransformer for 200-400W. Constant wattage autotransformer for 250-400W. Super CWA (pulse start ballast), DOE 2017 compliant, is required for metal halide 250-400W (SCWA option) for US shipments only. CSA, NOM or INTL required for probe start shipments outside of the US. Ballast is 100% factory-tested.

Socket: Mogul base socket for 250M and above, and 70-400S, with copper alloy, nickel-plated screw shell and center contact. UL listed 1500W, 600V.

**LISTINGS** – UL Listed (standard). CSA Certified (see Options). UL listed for 25°C ambient and wet locations. IP65 rated in accordance with standard IEC 529.

**WARRANTY** — 1-year limited warranty. Complete warranty terms located at:  
[www.acuitybrands.com/CustomerResources/Terms\\_and\\_conditions.aspx](http://www.acuitybrands.com/CustomerResources/Terms_and_conditions.aspx)

**Note:** Actual performance may differ as a result of end-user environment and application.

Specifications subject to change without notice.



Catalog Number
Notes
Type



#### Specifications

EPA: 1.2 ft.<sup>2</sup>

\*Weight: 35.9 lbs (16.28 kg)

Length: 17-1/2" (44.5)

Width: 17-1/2" (44.5)

Depth: 7-1/8" (18.1)

All dimensions are inches (centimeters) unless otherwise specified.

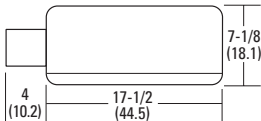
\*Weight as configured in example below.





Soft Square Lighting

# KAD

METAL HALIDE: 250-400W  
HIGH PRESSURE SODIUM: 70-400W  
20'TO 35' MOUNTING



### ORDERING INFORMATION For shortest lead times, configure product using **bolded options**. Example: KAD 400M R3 TB SCWA SPD04 LPI

KAD	250M		SR4SC		TB	SCWA	SPD04		
Series	Wattage		Distribution		Voltage	Ballast	Mounting <sup>9</sup>		
KAD	Metal halide	High pressure sodium <sup>1</sup>	Standard reflectors	High performance reflectors <sup>5</sup>	120	(blank) Magnetic ballast	Ships in fixture carton		Arm length
	250M <sup>1</sup>	400M <sup>1,2</sup>	R2 IES type II asymmetric <sup>4</sup>	SR2 IES type II asymmetric <sup>4</sup>	208 <sup>6</sup>	CWI Contant wattage isolated <sup>8</sup>	SPD___ Square pole	04 4" arm	
	70S		R3 IES type III asymmetric <sup>4</sup>	SR3 IES type III asymmetric <sup>4</sup>	240 <sup>6</sup>		RPD___ Round pole	06 6" arm	
	100S		R4 IES type IV forward throw <sup>4</sup>	SR4SC IES type IV forward throw	277		WBD___ Wall bracket	09 9" arm	
	150S				347		WWD___ Wood or pole wall	12 12" arm	
	250S				480 <sup>6</sup>	 	Ships separately <sup>10,11</sup>		
	400S		R5S IES type V square		TB <sup>7</sup>	SCWA Super CWA pulse-start ballast	DAD12P Degree arm (pole)		
					23050HZ <sup>8</sup>	NOTE: For shipments to U.S. territories, SCWA must be specified to comply with EISA.	DAD12WB Degree arm (wall)		
							KMA Mast arm external fitter		
							KTMB Twin mounting bar		
							WBA Decorative wall bracket <sup>12</sup>		

									LPI		
Options					Finish <sup>17</sup>				Lamp <sup>18</sup>		
<u>Shipped installed in fixture</u>		CSA	CSA Certified	PE3	NEMA twist-lock PE (347V)	(blank)	Dark bronze	DNAXD	Natural aluminum	LPI	Lamp included
SF	Single fuse (120, 277, 347V) <sup>13</sup>	INTL	Available MH for probe start shipping outside the U.S.	PE4	NEMA twist-lock PE (480V)	DWH	White	DWHXD	White	L/LP	Less lamp
DF	Double fuse (208, 240, 480V) <sup>13</sup>			PE7	NEMA twist-lock PE (277V)	DBL	Black	DDBTXD	Textured dark bronze		
PD	Power tray <sup>14</sup>	REGC1	California Title 20, effective 1/1/2010	SC	Shorting cap for PER option	DMB	Medium bronze	DBLBXD	Textured black		
PER	NEMA twist-lock receptacle only (no photocontrol)		<u>Shipped separately</u> <sup>10</sup>	VG	Vandal guard <sup>16</sup>	DNA	Natural aluminum	DNATXD	Textured natural aluminum		
QRS	Quartz restrike system <sup>15</sup>	HS	House side shield	WG	Wire guard <sup>16</sup>	<u>Super Durable Finishes</u>					
QRSTD	QRS time delay <sup>15</sup>	PE1	NEMA twist-lock PE (120, 208, 240V)			DDBXD	Dark bronze	DWHGXD	Textured white		
WTB	Terminal wiring block <sup>14</sup>					DBLXD	Black				

Accessories: Tenon Mounting Slipfitter (RPDXX required.) Order as separate catalog number. Must be used with pole mounting.							
Number of fixtures							
Tenon O.D.	One	Two@180°	Two@90°	Three@120°	Three@90°	Four@90°	
2-3/8"	T20-190	T20-280	T20-290 <sup>19</sup>	T20-320 <sup>19</sup>	T20-390 <sup>19</sup>	T20-490 <sup>19</sup>	
2-7/8"	T25-190	T25-280	T25-290 <sup>19</sup>	T25-320	T25-390 <sup>19</sup>	T25-490 <sup>19</sup>	
4	T35-190	T35-280	T35-290 <sup>19</sup>	T35-320	T35-390 <sup>19</sup>	T35-490 <sup>19</sup>	

#### Notes

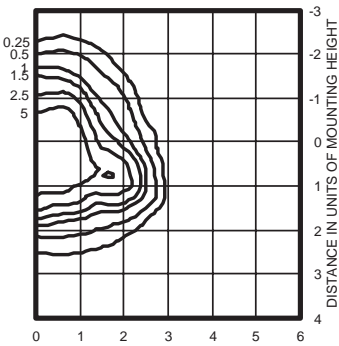
- These wattages require the REGC1 option to be chosen for shipments into California for Title 20 compliance. 250M REGC1 in not available in 347 or 480V.
- Reduced jacket ED28 required for SR2, SR3 and SR4SC optics.
- Not available with SCWA.
- House-side shield available.
- High performance reflectors not available with QRSTD.
- Must specify CWI for use in Canada.
- Optional multi-tap ballast (120, 208, 240, 277V; in Canada: 120, 277, 347V).
- Consult factory for available wattages.
- 9" or 12" arm is required when two or more luminaires are oriented on a 90° drilling pattern.
- May be ordered as an accessory.
- Must specify finish when ordered as an accessory.
- Only available with SPD04 and SPD09. Can be ordered as separate line item.
- Must specify voltage. N/A with TB.
- Only available with SR2, SR3 and SR4SC optics.
- Max allowable wattage lamp included.
- Prefix with KAD when ordered as an accessory.
- See [www.lithonia.com/archcolors](http://www.lithonia.com/archcolors) for additional color options.
- Must be specified. L/LP not available with MHC.
- Must use RPD09 or RPD12.



**KAD Metal Halide, Arm-mounted Soft Square Cutoff**

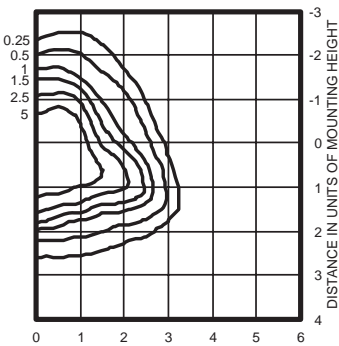
Coefficient of Utilization      \_\_\_\_\_  
Initial Footcandles              \_\_\_\_\_

**KAD 400M R2** Test no. 1193083101P  
**ISOILLUMINANCE PLOT (Footcandle)**



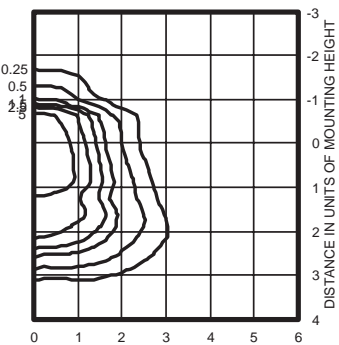
400W pulse start metal halide lamp, rated 38000 lumens. Footcandle values based on 20' mounting height.  
Classification: Type II, Short, Full Cutoff

**KAD 400M R3** Test no. 1192040902P  
**ISOILLUMINANCE PLOT (Footcandle)**



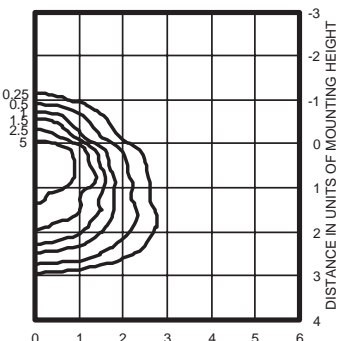
400W pulse start metal halide lamp, rated 38,000 lumens. Footcandle values based on 20' mounting height.  
Classification: Type II, Short, Full Cutoff

**KAD 400M R4** Test no. 1191110101P  
**ISOILLUMINANCE PLOT (Footcandle)**



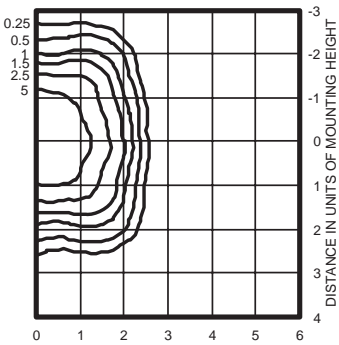
400W pulse start metal halide lamp, rated 38,000 lumens. Footcandle values based on 20' mounting height.  
Classification: Unclassified (Type III, Very Short), Full Cutoff

**KAD 400M R4HS** Test no. 1192061101P  
**ISOILLUMINANCE PLOT (Footcandle)**



400W pulse start metal halide lamp, rated 38,000 lumens. Footcandle values based on 20' mounting height.  
Classification: Unclassified (Type III, Very Short), Full

**KAD 400M R5S** Test no. 1194040801P  
**ISOILLUMINANCE PLOT (Footcandle)**



400W pulse start metal halide lamp, rated 38000 lumens. Footcandle values based on 20' mounting height.  
Classification: Unclassified (Type NC, Very Short), Full Cutoff

**Notes**

- 1 Photometric data for other distributions can be accessed at [www.lithonia.com](http://www.lithonia.com).
- 2 Tested to current IES and NEMA standards under stabilized laboratory conditions. Various operating factors can cause differences between laboratory data and actual field measurements. Dimensions and specifications on this sheet are based on the most current available data and are subject to change without notice.
- 3 For electrical characteristics, consult outdoor technical data specification sheets on [www.lithonia.com](http://www.lithonia.com).

**Mounting Height Correction Factor**

(Multiply the fc level by the correction factor)

25 ft. = 0.64

35 ft. = 0.32

40 ft. = 0.25

$$\left( \frac{\text{Existing Mounting Height}}{\text{New Mounting Height}} \right)^2 = \text{Correction Factor}$$